



**Women's Health Victoria**

*'knowledge into action'*

## **The Index:**

**A model for access to women's  
health and wellbeing data**

**ROSE DUREY**

Senior Policy Officer, Women's Health Victoria



Women's Health Victoria

*'knowledge into action'*

[www.theindex.org.au](http://www.theindex.org.au)

- Online gateway to Victorian women's health and wellbeing data
- Contains summary information on external reports and surveys
- Links you directly to the external website to access the original report or data



**Women's Health Victoria**

*'knowledge into action'*

## **OVERVIEW**

- History
- Principles
- What it contains
- Using the site
- The Index as a model



## **HISTORY OF THE INDEX**

- 2004 – Victorian Gendered Data Directory
- *The Source* – British Columbia Centre for Excellence in Women's Health
- 2007 – grant from Helen MacPherson Smith Trust
- 2008 – launch of The Index



**Women's Health Victoria**

*'knowledge into action'*

## **PRINCIPLES UNDERPINNING THE INDEX**

- Health and wellbeing is influenced by a range of factors including gender – social determinants
- Women and men experience health differently
- Policies, programs and services that address these differences are the most effective
- Sex disaggregated data is the first step in developing gender sensitive responses



## WHAT IS ON THE INDEX?

Data sources are:

- Sex disaggregated
- Quantitative
- Victorian, but where this isn't possible, sex disaggregated data at the national level is included
- Diversity lenses:
  - Aboriginal and Torres Strait Islander women
  - Women with disabilities
  - Same-sex attracted women
  - Culturally and linguistically diverse women
  - Sexual diversity



# Women's Health Victoria

*'knowledge into action'*

Data sources are:

- Freely available online resources
- Regularly updated
- Come from various external websites including:
  - Federal and state government departments and institutes
  - University research departments
  - Non-government organisations
  - Independent research bodies
  - Academic publications



Women's Health Victoria

*'knowledge into action'*

## 12 categories of health and wellbeing

Demographics &  
diversity

Healthcare  
accessibility

Violence & safety

Education

Health

Mental health &  
wellbeing

Care relationships

Economic &  
employment  
conditions

Health behaviours

Sexual and  
reproductive health

Community  
connectedness

Living arrangements





# THE INDEX

*A Gateway to Victorian  
Women's Health & Wellbeing Data*

Women's Health Victoria

[Home](#)[About The Index](#)[Advanced Search](#)[About Us](#)[Resources](#)[Contact Us](#)[A- A A+](#)

## Browse Categories

[Demographics & Diversity](#)[Health](#)[Health Behaviours](#)[Health Care Accessibility](#)[Mental Health & Wellbeing](#)[Sexual & Reproductive  
Health](#)[Violence & Safety](#)[Care Relationships](#)[Community Connectedness](#)[Education](#)[Economic & Employment  
Conditions](#)[Living Arrangements](#)

## Welcome to The Index

Welcome to the Index of Victorian Women's Health and Wellbeing Data. The Index was developed by [Women's Health Victoria](#). It is an online gateway to evidence-based health and wellbeing data on Victorian women and girls across a wide variety of indicators relevant to a social model of health.

[Read more...](#)



Click on a category on the left to  
browse The Index...

## Latest News

### [WHV Issues Paper: Abortion](#)

10-May-10

Women's Health Victoria has published an Issues Paper on Abortion

### [WHV May Clearinghouse Connector - Women as Carers](#)

10-May-10

The May edition of Women's Health Victoria's Clearinghouse Connector is on women as carers.

## Search Options

[Advanced Data Source Search](#)[Site Search](#)[Search Help](#)[Complete Indicator Listing](#)


## Newest Data Sources

Job Search Experience,  
Australia, July 2009

Australian Labour Market  
Statistics, April 2010

Labour Force, Australia,  
Detailed, Quarterly

Health of Aboriginal and  
Torres Strait Islander  
Females, 2004-05

 [Print this page](#)



# THE INDEX

*A Gateway to Victorian  
Women's Health & Wellbeing Data*

Women's Health Victoria

[Home](#)[About The Index](#)[Advanced Search](#)[About Us](#)[Resources](#)[Contact Us](#)[A- A A+](#)

## Browse Categories

[Demographics & Diversity](#)[Health](#)[Health Behaviours](#)[Health Care Accessibility](#)[Mental Health & Wellbeing](#)[Sexual & Reproductive  
Health](#)[Violence & Safety](#)[> Violence Against Women](#)[> Women Offenders](#)[Care Relationships](#)[Community Connectedness](#)[Education](#)[Economic & Employment  
Conditions](#)[Living Arrangements](#)

[Home](#) > [Violence & Safety](#)

## Violence & Safety

[Intro](#) | [Gender](#) | [Diversity](#) | [References](#)

### Introduction

Violence is gendered, in as much as women are most vulnerable to it and men are the primary perpetrators of it. Violence extends to the physical, sexual and psychological abuse of another. In Australia, more men than women are imprisoned for acts of violence, and sexual assault is the second highest category of offence for men. Experience of violence is a known indicator of mental health and psychological wellbeing, and suicidality. Specific groups such as Aboriginal and Torres Strait Islander women and women with disabilities experience a range of additional factors that contribute to their greater risk of specific types of violence. Finding support and accessing appropriate services may also be difficult for some groups of women.


### Gender

Some information about violence and crime includes:

- Globally, 10-50% of women are affected by domestic violence<sup>[1]</sup>.
- Violence against women is a major contributor to women's experience of poor psychological wellbeing, with women more likely to be victims of violence than men and at greatest risk of violence from their male partners<sup>[1]</sup>.
- Women who have been subjected to domestic violence are four times more likely to experience traumatic stress symptoms than non-abused women<sup>[1]</sup>.
- Domestic violence leads to decreased psychological wellbeing in mid-aged women<sup>[2]</sup>, increased depression and other forms of mental illness that are linked to suicide ideation<sup>[3]</sup>.


## Search Options

[Advanced Data Source Search](#)[Site Search](#)[Search Help](#)[Complete Indicator Listing](#)

 [Print this page](#)

<b>Browse Categories</b>
Demographics & Diversity
Health
Health Behaviours
Health Care Accessibility
Mental Health & Wellbeing
Sexual & Reproductive Health
<b>Violence &amp; Safety</b>
> Violence Against Women
> <b>Women Offenders</b>
Care Relationships
Community Connectedness
Education
Economic & Employment Conditions
Living Arrangements

## Women Offenders

 [Print this page](#)

< 1 2 3 4 > | Page 1 of 4 | Items 1 - 5 of 16

### Search Options

[Advanced Data Source Search](#)

[Site Search](#)

[Search Help](#)

[Complete Indicator Listing](#)

[Add Bookmark](#) | [View Bookmarks](#) | [Bookmarks Help](#)

### Prisoners in Australia, 2009 - Australian Bureau of Statistics (2009)

This report provides a gendered history of previous imprisonment and imprisonment rates between 1999 and 2009 .

The report also analyses imprisonment rates of indigenous prisoners between 2008 and 2009 by gender and provides a gender and age analysis of indigenous prisoners.

[Further Info](#)

[Take me to the external Data Source](#)

[Add Bookmark](#) | [View Bookmarks](#) | [Bookmarks Help](#)

### Statistical Profile of the Victorian Prison System: 2003-04 - 2007-08 - Corrections Victoria, Department of Justice (2009)

This report includes demographic, crime and sentencing data for women within the Victorian prison system presented in a time series format. Data includes imprisonment rate, mean age, percentage of prisoners under 25 years of age and over 50 years of age, prior imprisonment, most serious offence, expected time to serve and security rating. Additional data includes the country of birth, highest level of education and employment status.

[Further Info](#)

[Take me to the external Data Source](#)

[Add Bookmark](#) | [View Bookmarks](#) | [Bookmarks Help](#)

[> Women Offenders](#)[Care Relationships](#)[Community Connectedness](#)[Education](#)[Economic & Employment Conditions](#)[Living Arrangements](#)

## Details

This report provides a gendered history of previous imprisonment and imprisonment rates between 1999 and 2009 .

The report also analyses imprisonment rates of indigenous prisoners between 2008 and 2009 by gender and provides a gender and age analysis of indigenous prisoners.

### [Take me to the external Data Source](#)

Category	Violence & Safety
Indicator	Women Offenders
Published By	Australian Bureau of Statistics
Published Date	2009
Catalogue Number	4517.0
Frequency	Annual
Contact	Australian Bureau of Statistics Ph: 1300 135 070
Cost	Free
National Data	Yes
State Wide Data	Yes
Regional Data	No
LGA Data	No
Gender Lens	Yes
Aboriginal and Torres Strait Islander Lens	Yes
Disability Lens	No
Sexual Diversity Lens	No
Cultural and Linguistic Diversity Lens	No
Age Classification	NA



# THE INDEX

*A Gateway to Victorian  
Women's Health & Wellbeing Data*

Women's Health Victoria



[Home](#) | [About The Index](#) | [Advanced Search](#) | [About Us](#) | [Resources](#) | [Contact Us](#) | [A-](#) [A](#) [A+](#)

## Browse Categories

[Demographics & Diversity](#)

[Health](#)

[Health Behaviours](#)

[Health Care Accessibility](#)

[Mental Health & Wellbeing](#)

[Sexual & Reproductive  
Health](#)

[Violence & Safety](#)

[Care Relationships](#)

[Community Connectedness](#)

[Education](#)

[Economic & Employment  
Conditions](#)

[Living Arrangements](#)

[Home](#) > [Advanced Search](#)

## Advanced Search

### Search Help

Keywords

Category

All categories



Indicator

All indicators



Includes:

Gendered data

Aboriginal and Torres Strait Islander data

Disability data

Sexual Diversity data

Cultural and Linguistic Diversity (CALD) data

Includes:

National data

State data

Regional data

LGA data

Publisher:

All publishers



Free to Public



# Women's Health Victoria

*'knowledge into action'*



- Current focus is on Victoria, but users are from around Australia
- Model can be adapted to other regions

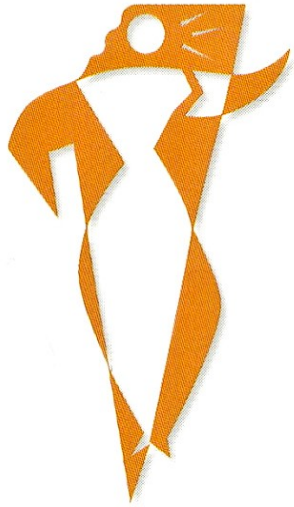


Women's Health Victoria

*'knowledge into action'*

[www.theindex.org.au](http://www.theindex.org.au)

- One, unique location
- Impact of gender on health and wellbeing made clearer
- Leads to better health outcomes



# THE INDEX

*A Gateway to Victorian  
Women's Health &  
Wellbeing Data*

Women's Health Victoria

[www.theindex.org.au](http://www.theindex.org.au)