



The social determinants of women's sexual and reproductive health and wellbeing

Women's Health West

Elly Taylor

Women's Health Promotion Coordinator



Overview

- Examine how Women's Health West conceptualises the social determinants of women's sexual and reproductive health in a Victorian context
- Explore the *Sexual and Reproductive Health Promotion Framework 2012*, which is a conceptual evidence-based guide for women's sexual and reproductive health promotion planning



Women's Health West

Feminist women's health service for Melbourne's western metropolitan region

Our work is informed by three conceptual frameworks:


- health promotion
- community development
- a gender equity approach



Various conceptualisations of the social determinants of health

<i>Ottawa Charter</i>	<i>World Health Organisation</i>	<i>Health Canada</i>	<i>Dahlgren and Whitehead</i>	<i>Raphael et al.</i>
Peace Shelter Education Food Income Stable ecosystem Sustainable resources Social justice Equity	Social gradient Stress Early life Social exclusion Work Unemployment Social support Addiction Food Transport	Income and social status Social support networks Education Employment and working conditions Physical and social environment Healthy child development Gender Culture	Agriculture and food production Education Work environment Unemployment Water and sanitation Healthcare services Housing	Aboriginal status Early life Education Employment and working conditions Food security Gender Healthcare services Housing Income and its distribution Social safety net Social exclusion Unemployment and employment security



- 
- Phase one: Mapped service and program delivery and undertook a needs analysis of communities who are disproportionately affected by sexual and reproductive health inequity

Mapping and Needs Analysis: Sexual and Reproductive Health in the HealthWest Catchment Report, 2010

- Phase two: Conducted an in-depth analysis of the social determinants of women's sexual and reproductive health

Social Determinants of Sexual and Reproductive Health Report, 2011



Social determinants of women's sexual and reproductive health

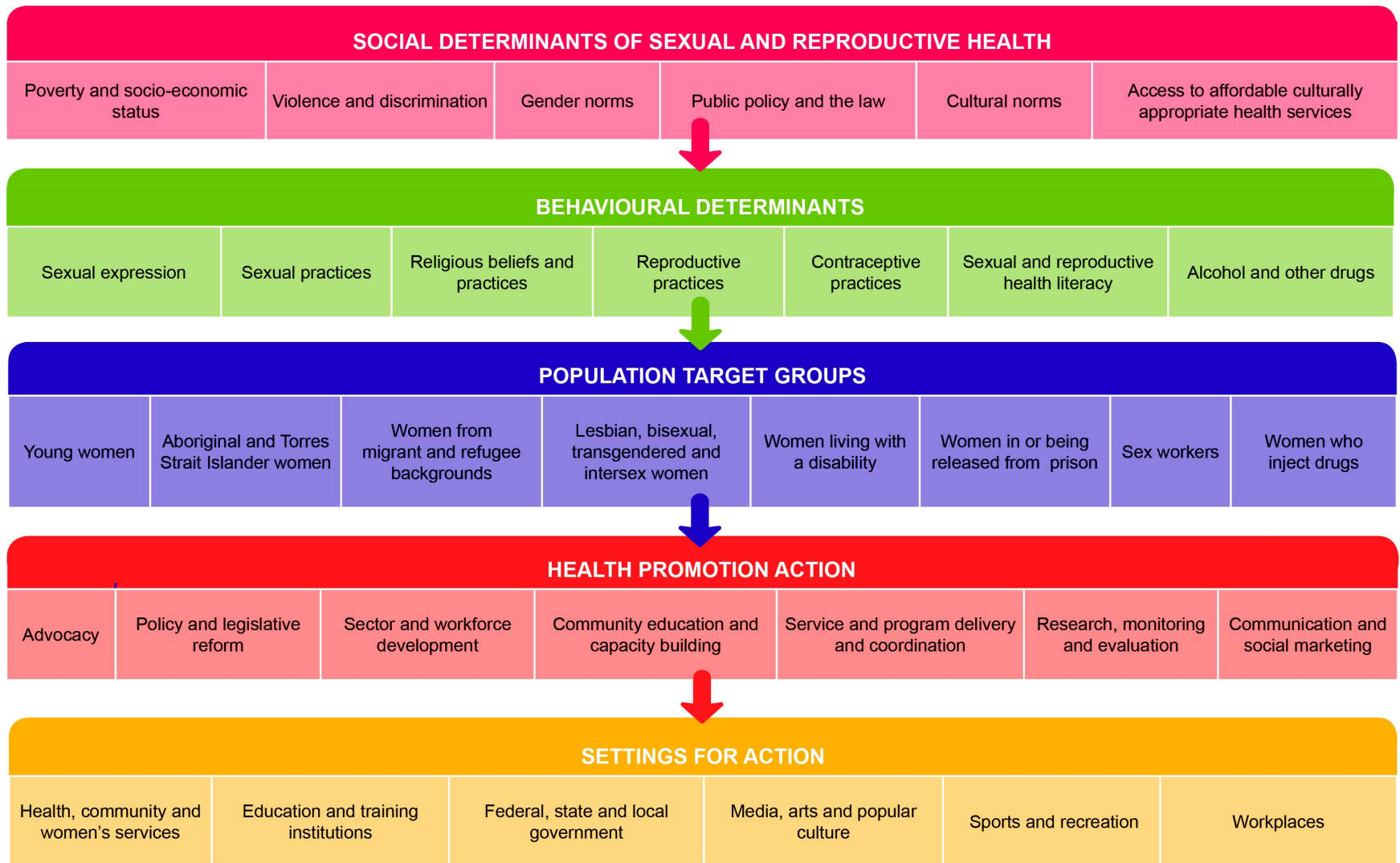
- Poverty and socio-economic status
- Violence and discrimination
- Gender norms
- Public policy and the law
- Cultural norms
- Access to affordable culturally appropriate health services

317-319 Barkly Street, FOOTSCRAY VICTORIA 3011 | Phone: (03) 9689 9588 | Fax: (03) 9689 3861 | Email: info@whwest.org.au | Web: www.whwest.org.au



women's **health** west - equity and justice for women in the west

Sexual and reproductive health promotion framework



Action for Equity: A sexual and reproductive health plan for Melbourne's west 2013-2017

Objective 1: Increase access to affordable contraceptives and fertility management services

Strategies

- Advocate to the federal government that new-generation contraceptives are funded through the Pharmaceutical Benefits Scheme
- Undertake an advocacy strategy informed by women's qualitative narratives to increase access to publicly funded surgical terminations
- In partnership with Medicare locals, community health and local general practitioners, advocate for the roll out of medical abortion to ensure that there are two providers in each of the west's seven local government areas
- Ensure *Action for Equity* is strategically linked to *Preventing Violence Together: Western Region Action Plan to Prevent Violence Against Women* to support the prevention of violence against women.

Objective 2: Advocate for systemic and legislative reform that promotes equity, social inclusion and sexual and reproductive health rights

Strategies

- Mobilise the seven local governments in the west to identify sexual and reproductive health as a health priority within their municipal public health plans or other council policies
- Advocate for law reform that upholds and protects sexual and reproductive health rights, including marriage equality and safeguards against forced sterilisation of women with a disability.



*Mapping and Needs Analysis
Sexual and Reproductive Health in the
HealthWest Catchment Report, 2010*

*Social Determinants of Sexual and Reproductive
Health Report, 2011*

available at www.whwest.org.au

Elly Taylor

Health Promotion Coordinator

Email: elly@whwest.org.au

317-319 Barkly Street, FOOTSCRAY VICTORIA 3011 | Phone: (03) 9689 9588 | Fax: (03) 9689 3861 | Email: info@whwest.org.au | Web: www.whwest.org.au



women's **health** west - equity and justice for women in the west

*Mapping and Needs Analysis
Sexual and Reproductive Health in the
HealthWest Catchment Report, 2010*

*Social Determinants of Sexual and Reproductive
Health Report, 2011*

available at www.whwest.org.au

Elly Taylor

Health Promotion Coordinator

Email: elly@whwest.org.au

317-319 Barkly Street, FOOTSCRAY VICTORIA 3011 | Phone: (03) 9689 9588 | Fax: (03) 9689 3861 | Email: info@whwest.org.au | Web: www.whwest.org.au



women's **health** west - equity and justice for women in the west