

Improved Service Delivery Model for Women in Western NSW

Jane Beach
Coordinator Women's Health / Domestic
Violence
Western NSW Local Health District

Margot Anderson
Director Primary Health
Far West Medicare Local

- **Remoteness**
- **Access to Services**
- **Screening rates well below NSW average**



Socio-economic disadvantage in Far West Remote communities is well below the average score for Australia of 1000 ; the score varies from 765 in Brewarrina to 915 in Bourke





FAR WEST

Cobar

Bourke

Lightning Ridge

Dubbo

Sydney

MURRUMBIDGEE

Network with Vic

SOUTHERN NSW

HUNTER NEW ENGLAND

ILLAWARRA SHOALHAVEN

WESTERN NSW

NORTHERN NSW

MID NORTH COAST

A photograph of two pink cockatoos perched on a thick, light-colored tree branch. The background shows more of the tree's branches and green leaves against a clear blue sky. The text is overlaid on the lower-left portion of the image.

Partnerships

- **Western NSW Local Health District**
- **Western NSW WHD Women's Health Program**
- **Far West Medicare Local**
- **OCHRE Health General Practice**
- **Royal Flying Doctor female GP Program**
- **Aboriginal Community Controlled Health Services**

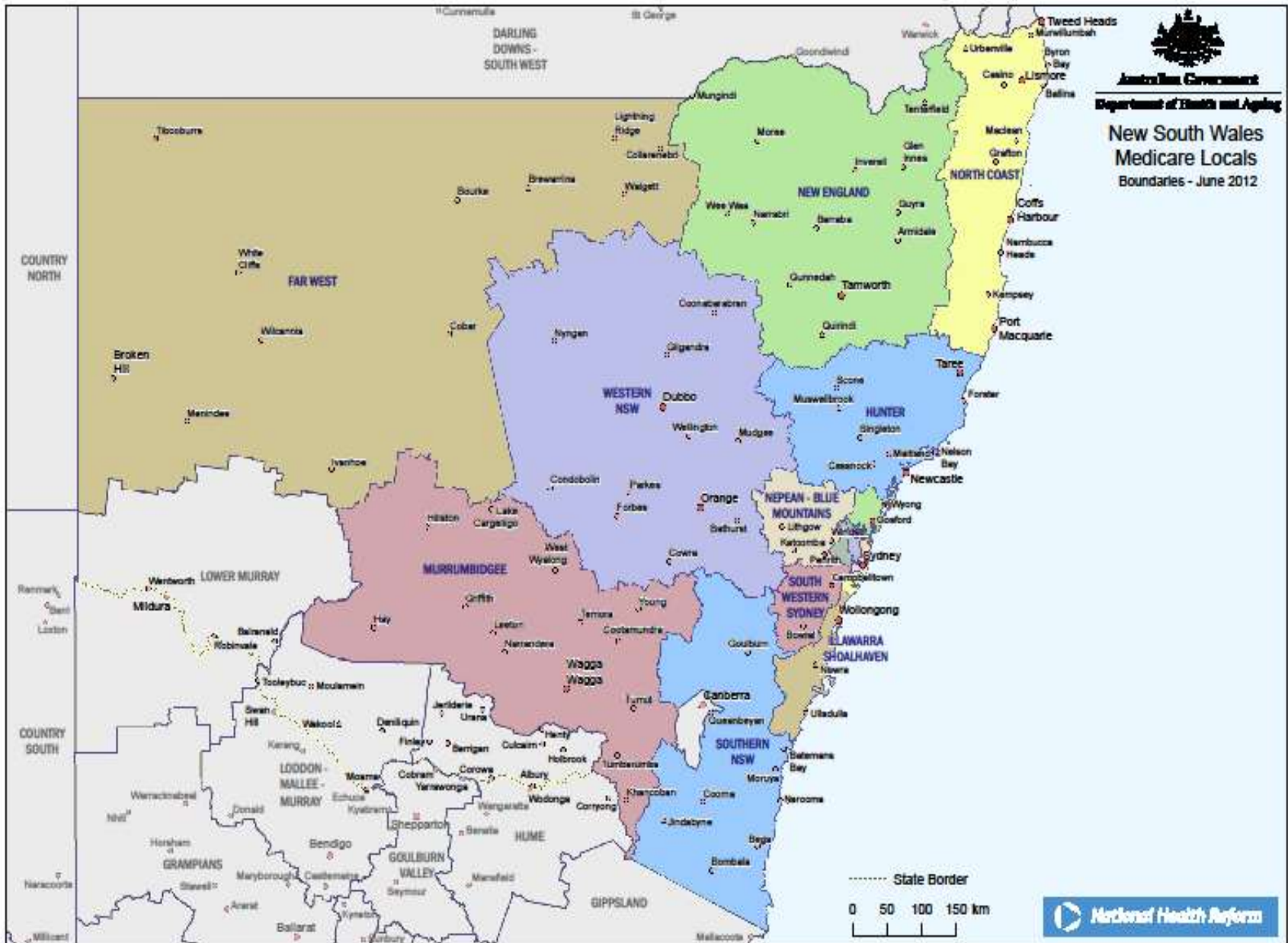


Australian Government

Department of Health and Ageing

New South Wales Medicare Locals

Boundaries - June 2012



- **Consultations**
- **Map Service Delivery**
- **Plan coordinated approach**
- **Recruitment / Training**



A photograph of four kangaroos standing in a field of tall, golden grass. The kangaroos are silhouetted against the bright field. In the background, there is a dense line of dark trees under a clear blue sky. A vertical red line is visible in the foreground on the right side.

Short Term Initiative

Implement & evaluate a culturally appropriate education program & clinical service delivery for five rural & remote communities on “Women’s Business” using the “3 step approach” as a strategy to improving access to high risk population groups of unscreened & under-screened women.

The model is coordinated between Far West Medicare Local , Western NSW Local Health District , Breastscreen NSW & Aboriginal Community Controlled Health Services









Longer Term Initiatives

- **Culturally appropriate integrated clinical service focusing on locally sustainable solutions through General Practice.**
- **Health Promotion Programs & projects activities to compliment clinical service.**



What has been achieved

- **Key stakeholders working in “Partnership”**
- **Program plan agreement**
- **Successful recruitment**
- **Training**
- **Improved KPI's**
- **Enhanced Project Funding**

What will be achieved

- **Development of Framework**
- **Sustainable partnership model**
- **Training for Aboriginal Health workers**
- **Further training for Practice Nurses**
- **Establish Colposcopy Clinic's**





What has been learnt

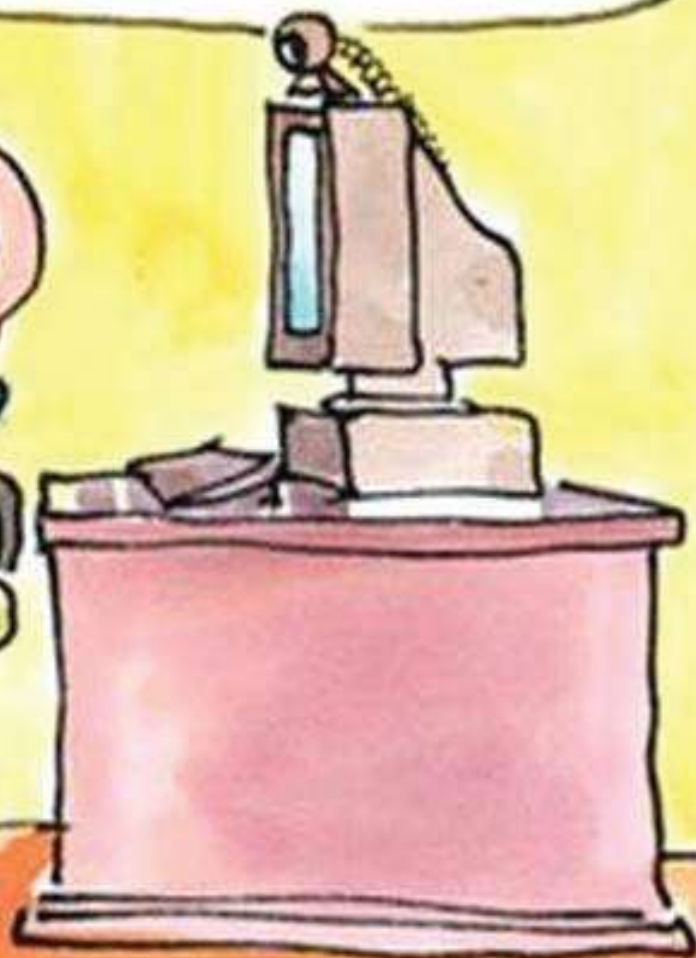
- **Mindful of Stakeholder priorities**
- **Follow appropriate communication protocols**
- **Maintain regular communication**
- **Link education to objectives**



Areas for Improvement

- **Increased use of video conference**
- **Ongoing education support to remote Health Professionals**
- **Engagement & participation of “Community Champions”**

AS SOON AS YOUR VIDEO CONFERENCE WITH THE DOCTOR IS OVER, I'D LIKE A WORD WITH YOU TED.



ERKKI



Western Plains in Drought 2010



Western Plains in Flood 2012



Road Between Walgett and Brewarrina 02/12